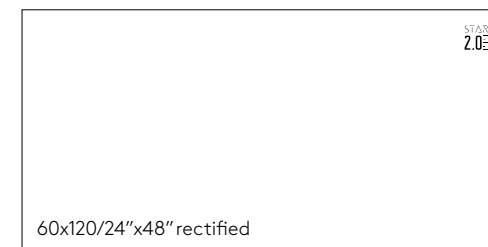
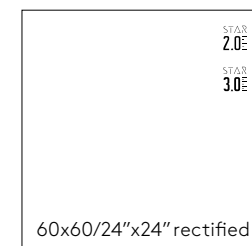
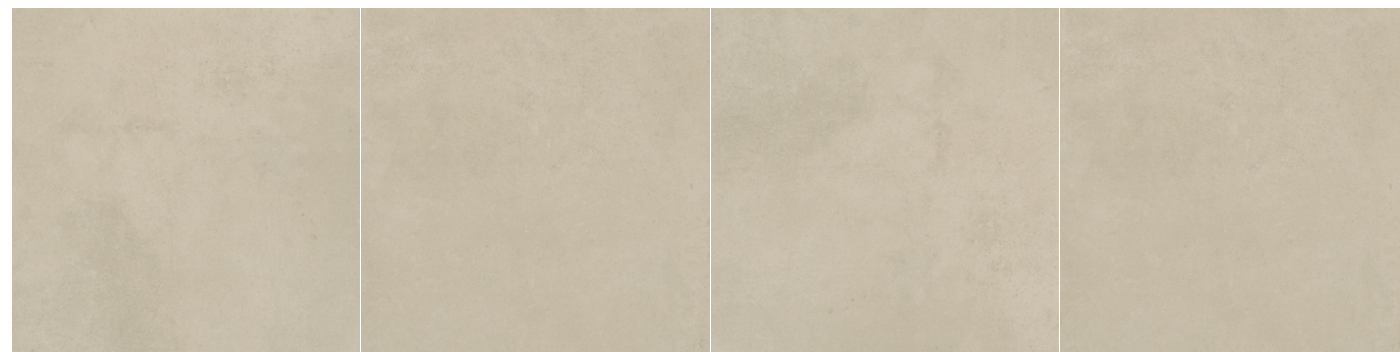




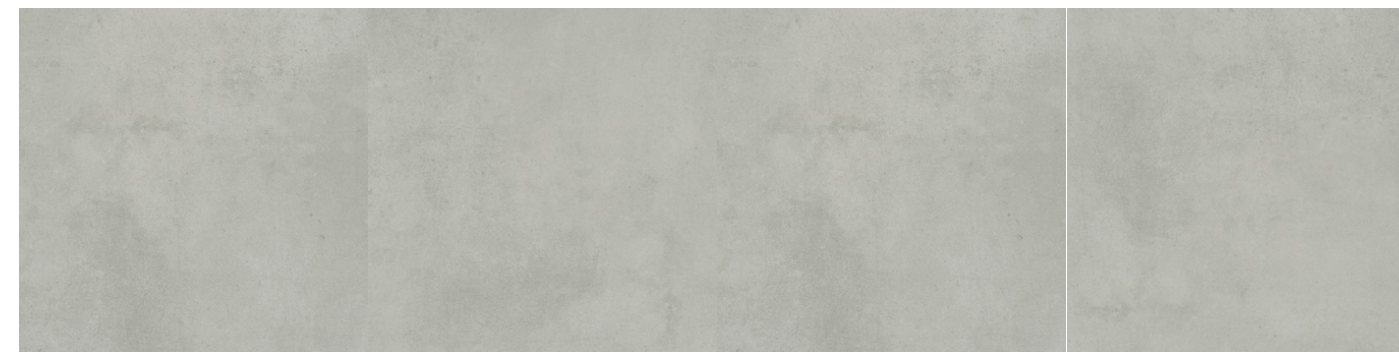
PEI
IV

R11





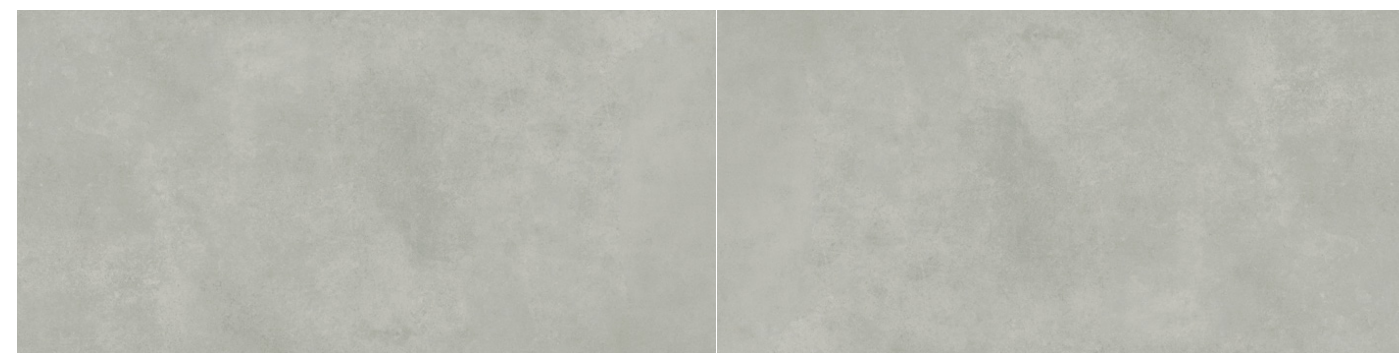
beige 60x60x3/24"x24"x1,20" rectified • 60x60x2/24"x24"x0,80" rectified



grey 60x60x3/24"x24"x1,20" rectified • 60x60x2/24"x24"x0,80" rectified




beige 60x120x2/24"x48"x0,80" rectified




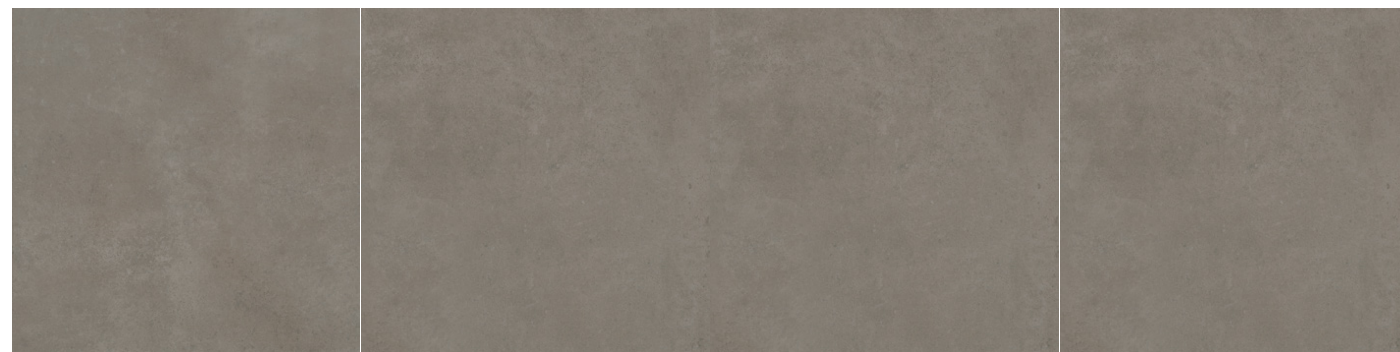
grey 60x120x2/24"x48"x0,80" rectified

color	format cm/in	thk. mm/in	ean code	surface	no. of faces	anti-slip	pei	rectified
beige	60x120/24"x48"	20/0,80"	5901503216781	mat	10	R11	IV	✓
	60x60/24"x24"	30/1,20"	5901503215067	mat	7	R11	IV	✓
	60x60/24"x24"	20/0,80"	5901503216774	mat	6	R11	IV	✓

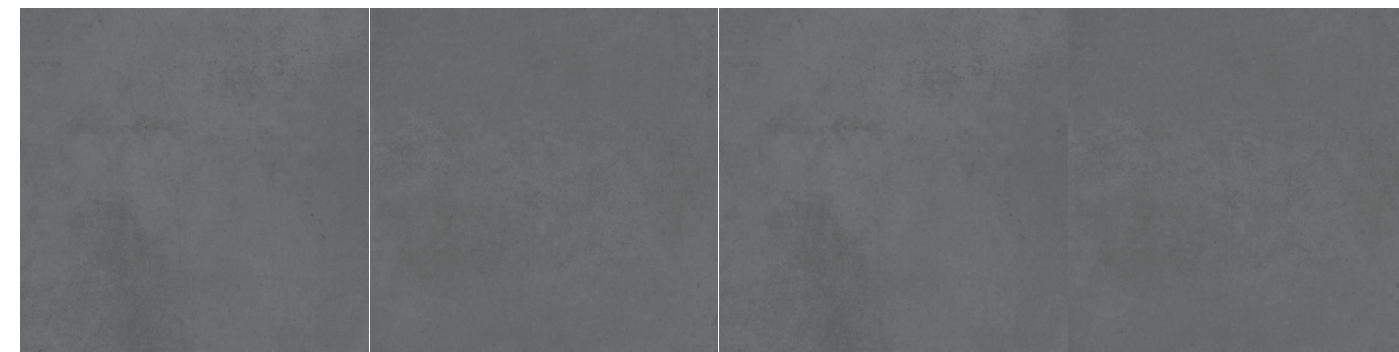
color	format cm/in	thk. mm/in	ean code	surface	no. of faces	anti-slip	pei	rectified
grey	60x120/24"x48"	20/0,80"	5901503220320	mat	7	R11	IV	✓
	60x60/24"x24"	30/1,20"	5901503212127	mat	9	R11	IV	✓
	60x60/24"x24"	20/0,80"	5901503220351	mat	9	R11	IV	✓

	format cm/in	thk. mm/in	pcs./box	m ² /sq ft box	kg/lb box	box/pallet	m ² /sq ft pallet	kg/lb pallet
	60x120/24"x48"	20/0,80"	1	0,72/7,75	32/70,55	32	23,04/248	1024/2258
	60x60/24"x24"	30/1,20"	1	0,36/3,87	25/55,12	40	14,40/154,99	1000/2205
	60x60/24"x24"	20/0,80"	2	0,72/7,75	31/68,34	30	21,60/232,50	930/2050

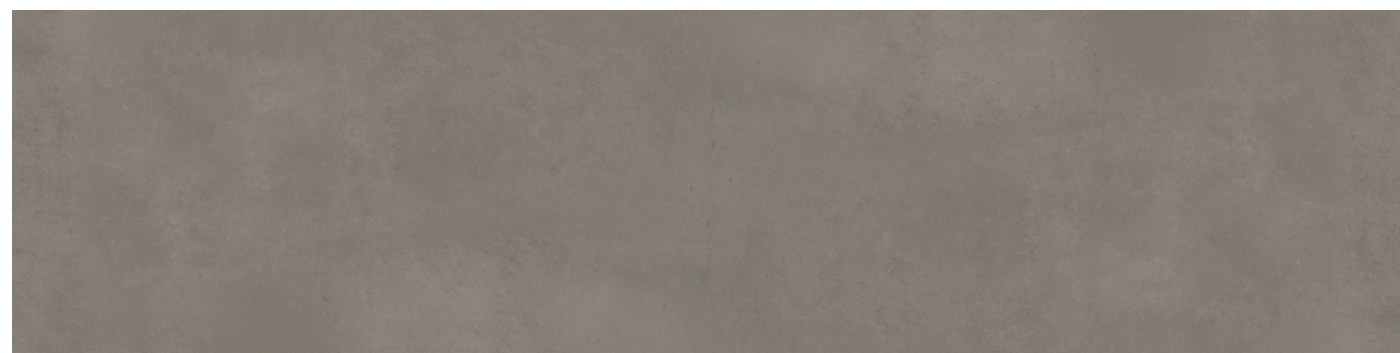
	format cm/in	thk. mm/in	pcs./box	m ² /sq ft box	kg/lb box	box/pallet	m ² /sq ft pallet	kg/lb pallet
	60x120/24"x48"	20/0,80"	1	0,72/7,75	32/70,55	32	23,04/248	1024/2258
	60x60/24"x24"	30/1,20"	1	0,36/3,87	25/55,12	40	14,40/154,99	1000/2205
	60x60/24"x24"	20/0,80"	2	0,72/7,75	31/68,34	30	21,60/232,50	930/2050



brown 60x60x3/24"x24"x1,20" rectified • 60x60x2/24"x24"x0,80" rectified



antracite 60x60x3/24"x24"x1,20" rectified • 60x60x2/24"x24"x0,80" rectified




brown 60x120x2/24"x48"x0,80" rectified




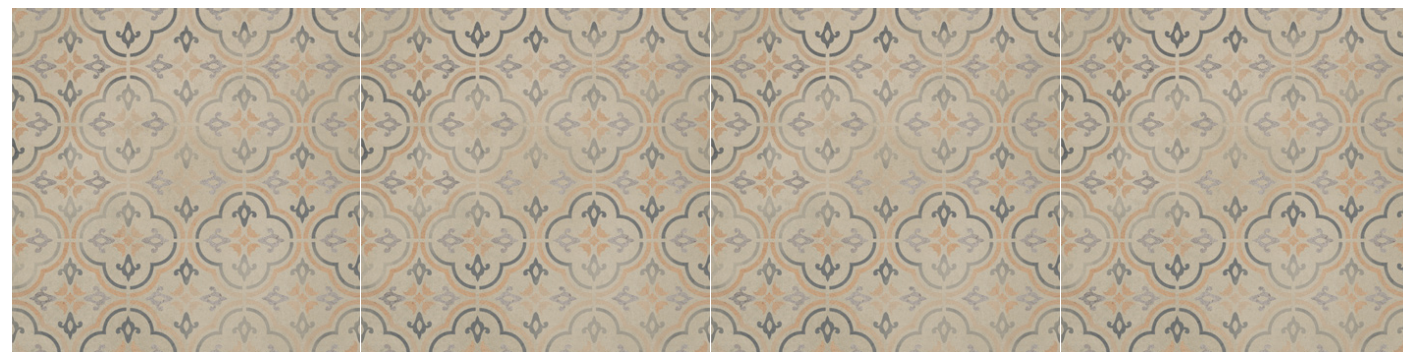
antracite 60x120x2/24"x48"x0,80" rectified

color	format cm/in	thk. mm/in	ean code	surface	no. of faces	anti-slip	pei	rectified
brown	60x120/24"x48"	20/0,80"	5901503217047	mat	8	R11	IV	✓
	60x60/24"x24"	30/1,20"	5901503215074	mat	6	R11	IV	✓
	60x60/24"x24"	20/0,80"	5901503217030	mat	6	R11	IV	✓

color	format cm/in	thk. mm/in	ean code	surface	no. of faces	anti-slip	pei	rectified
antracite	60x120/24"x48"	20/0,80"	5901503218402	mat	6	R11	IV	✓
	60x60/24"x24"	30/1,20"	5901503212134	mat	9	R11	IV	✓
	60x60/24"x24"	20/0,80"	5901503217955	mat	9	R11	IV	✓

	format cm/in	thk. mm/in	pcs./box	m ² /sq ft box	kg/lb box	box/pallet	m ² /sq ft pallet	kg/lb pallet
	60x120/24"x48"	20/0,80"	1	0,72/7,75	32/70,55	32	23,04/248	1024/2258
	60x60/24"x24"	30/1,20"	1	0,36/3,87	25/55,12	40	14,40/154,99	1000/2205
	60x60/24"x24"	20/0,80"	2	0,72/7,75	31/68,34	30	21,60/232,50	930/2050

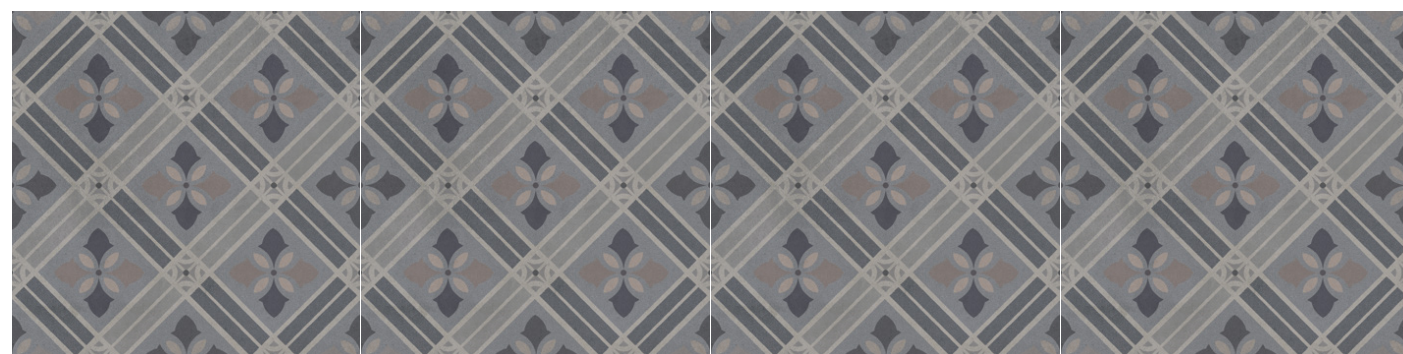
	format cm/in	thk. mm/in	pcs./box	m ² /sq ft box	kg/lb box	box/pallet	m ² /sq ft pallet	kg/lb pallet
	60x120/24"x48"	20/0,80"	1	0,72/7,75	32/70,55	32	23,04/248	1024/2258
	60x60/24"x24"	30/1,20"	1	0,36/3,87	25/55,12	40	14,40/154,99	1000/2205
	60x60/24"x24"	20/0,80"	2	0,72/7,75	31/68,34	30	21,60/232,50	930/2050



terra 60x60x3/24"x24"x1,20" rectified




blue 60x60x3/24"x24"x1,20" rectified



grey 60x60x3/24"x24"x1,20" rectified

color	format cm/in	thk. mm/in	ean code	surface	no. of faces	anti-slip	pei	rectified
terra	60x60/24"x24"	30/1,20"	5901503219881	mat	1	R11	IV	✓
blue	60x60/24"x24"	30/1,20"	5901503219874	mat	1	R11	IV	✓
grey	60x60/24"x24"	30/1,20"	5901503219867	mat	1	R11	IV	✓

	format cm/in	thk. mm/in	pcs./box	m²/sq ft box	kg/lb box	box/pallet	m²/sq ft pallet	kg/lb pallet
	60x60/24"x24"	30/1,20"	1	0,36/3,87	25/55,12	40	14,40/154,99	1000/2205








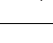






select blue 60x60x3/24"x24"x1,20" /rectified/

format cm/in	thk. mm/in	pcs./box	m ² /sq ft box	kg/lb box	box/pallet	m ² /sq ft pallet	kg/lb pallet
collection star 3.0							
60x60/24"x24"	30/1,20"	1	0,36/3,87	25/55,12	40	14,40/154,99	1000/2205
90x90/36"x36"	30/1,20"	1	0,81/8,72	56/123,46	20	16,2/174,40	1120/2469
collection star 2.0							
60x60/24"x24"	20/0,80"	2	0,72/7,75	31/68,34	30	21,60/232,50	930/2050
45x90/18"x36"	20/0,80"	2	0,81/8,72	37/81,55	24	19,44/209,25	915/2016
30x120/12"x48"	20/0,80"	1	0,36/3,87	16/35,27	50	18/193,50	800/1764
90x90/36"x36"	20/0,80"	1	0,81/8,72	35,2/77,20	30	24,3/261,56	1080/2380
60x120/24"x48"	20/0,80"	1	0,72/7,75	32/70,55	32	23,04/248	1024/2258

pictograms description

 floor i 'Zh'	 frost resistance	 rectified
 abrasion resistance	R11 anti-slip	 mat
 shade spectrum		

Dimension and flatness of surface Abmessungen und ebenheit der fläche Размер и плоскость поверхности		Standards Normen Нормы	N ≥ 15 cm	
			Requirements Anforderungen Требования	Average value Erzielter Durchschnittswert Среднее
	Length, Länge, Длина	EN ISO 10545-2	± 0,6%	± 0,5%
	Width, Breite, Ширина		± 0,6%	± 0,5%
	Thickness, Stärke, Толщина		± 5% / 0,5 mm	± 3% / max 0,5 mm
	Deviation of the angle Abweichung vom winkel Отклонение от угла		± 0,5% / 2mm	± 0,05% / max 2 mm
	Surface flatness Flächenebenheit Плоскость поверхности		± 0,5% / 2mm	± 0,2% / max 2 mm
Physical properties Physikalische eigenschaften Физические свойства		Standards Normen Нормы	Requirements Anforderungen Требования	Average value Erzielter Durchschnittswert Среднее
	Water absorption Wasseraufnahmevermögen Водопоглощаемость	EN ISO 10545-3	E ≤ 0,5%	0,1% - 0,2%
	Breaking strength Modulus of rupture Bruchkraft Преломляющая сила	EN ISO 10545-4	for thickness, bei d. Stärke, для толщины ≥ 7,5 mm - ≥ 1300 N	30 MM 26 000 N 20 MM 8 500 N
	Modulus of rupture Biegefestigkeit Прочность при изгибе	EN ISO 10545-4	≥ 35 N / mm ²	30 MM 48 N / mm ² 20 MM 48 N / mm ²
	Abrasion resistance Abriebfestigkeit Стойкость к абразивному износу	EN ISO 10545-7	According to the manufacturer's declaration, laut Herstellererklärung, согласно декларации производителя	IV PEI
	Resistance to thermal shock Widerstand gegen Temperaturschock Устойчивость к термическим нагрузкам	EN ISO 10545-9	requirements erforderlich требуемая	resistant beständig стойкие
	Crazing resistance Rissbeständigkeit Устойчивость к растрескиваниям шг	EN ISO 10545-11	requirements erforderlich требуемая	resistant beständig стойкие
	Frost resistance Frostbeständigkeit Морозостойкость	EN ISO 10545-12	requirements erforderlich требуемая	resistant beständig стойкие
	Chemical resistance Chemische Beständigkeit Химическая стойкость	EN ISO 10545-13	min. B	A, LA, HA
	Resistance to spotting Fleckempfindlichkeit Стойкость к изменению цветового тона	EN ISO 10545-14	min. 3	5
	The release of lead and cadmium Freisetzung von Blei und Cadmium Высвобождение свинца и кадмия	EN ISO 10545-15	Cd 0,07 mg/dm ² Pb 0,8 mg/dm ²	0 0
	Slip resistance Rutschhemmung Противоскользящие свойства	DIN 51130	According to the manufacturer's declaration, laut Herstellererklärung, согласно декларации производителя	R11

Values according / Normwerte / Значения за стандартом: EN 14411:2012
Certificate / Zertifikate / Сертификаты: PN-EN ISO 9001; PN-EN ISO 14001